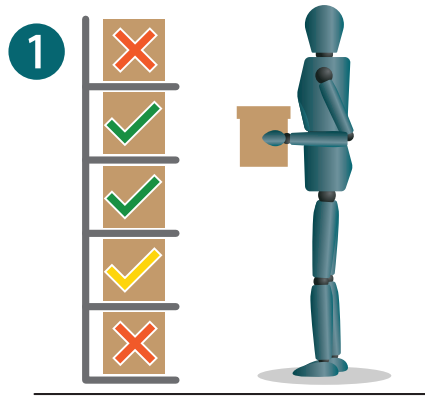


BACK. SHOULDERS. NECK. HANDS.

Happy and Healthy at Work



Store it off the floor

- Store heavy objects between knee and shoulder level. Waist level is best.
- Store items off the floor to minimize bending.
- Use tables, benches or stands to get work off the floor.
- Use carts or equipment to move heavy items.



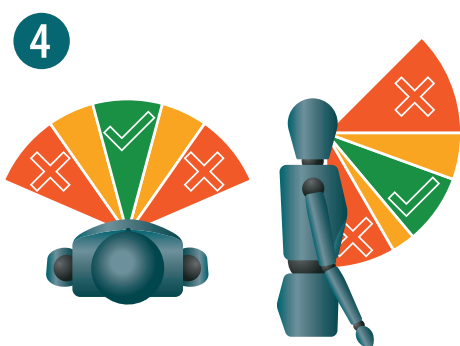
Keep it close

- Perform tasks close to your body.
- Avoid leaning and stretching forward to reduce stress on your lower back.
- Avoid side reaches that twist the spine.
- Your smart workstation: keep common tasks close; less common tasks out of the way.



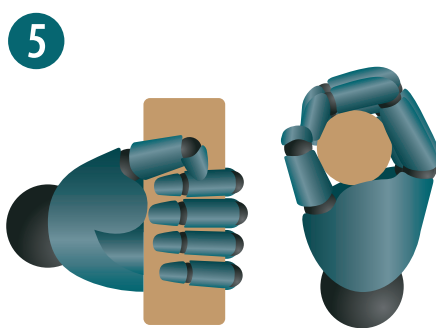
Hands below head

- Use a stool, platform, ladder or hoist so work is below head/shoulder height.
- Choose lighter tools and materials for overhead work.
- Use a bit extender for drills/screw guns.
- Find other tools/assists to limit overhead work.



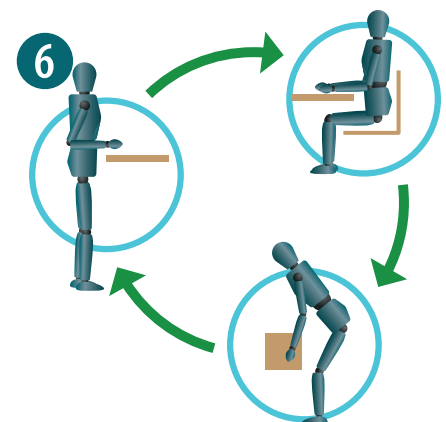
Look straight ahead

- Position your work and equipment to keep your gaze straight ahead.
- Position your work below eye level to align your vision with the task.
- Arrange your workspace so common items are centred to your body.
- Remember to give your neck a break.



Get a (good) grip

- High force work: power grip (full hand). Low force, precision work: pinch grip.
- Choose a tool and grip that puts your wrist in a strong, natural posture.
- Choosing tools: good shape for the task, fits your hand, edges don't dig in.
- Power tools with low vibration and no kickback are best.



Change it up

- Include micro breaks in your tasks for body recovery and fatigue prevention.
- Fatigue can occur during long duration efforts and repetitive tasks.
- Rotate different tasks to provide working rests.
- Tasks that have MSD hazards and little recovery time have a high priority for change.

Identify and control workplace hazards. **Work shouldn't hurt!**



For more info visit:
msdprevention.com

© 2019 CRE-MSD. CRE-MSD receives funding through a grant provided by the Ontario Ministry of Labour. The views expressed are those of the authors and do not necessarily reflect those of the Province of Ontario.



Centre of Research
Expertise for the
Prevention of
Musculoskeletal Disorders

**Work
shouldn't
hurt**